

The EZPERT for Windows 95/98 and NT

EZPERT is the most advanced Project Management Graphics Systems. It is a proven software product which is used automatically to generate charts and diagrams, showing **COST**, **SCHEDULE**, and **RESOURCE** information for project management. Four different modules (**EZPERT/AN1**, **EZPERT/AN2**, **EZPERT/EN1**, and **EZPERT/EN2**) and nine optional special features comprise an **EZPERT** product line that allows the user to select the capabilities desired. All these three models perform the same function but feature different display formats. The primary difference between the three models is the manner in which network diagrams are displayed:

- **Model AN1** produces Activity-On-Arrow (Precedence, Variable and Logic) diagrams against early start dates.
- **Model AN2** produces Activity-On-Arrow (Precedence, Variable, Logic and Linear) diagrams against early start dates.
- **Model EN1** produces both activity oriented and event oriented (I-J, Variable and Logic) network diagrams against finish dates..
- **Model EN2** produces Activity-On-Arrow or Critical Path Methods (**CPM**) (I-J, Linear and Variable) diagrams against either a linear or variable time scale of early start dates.

Models **AN1** and **EN2** are most widely used in the construction industry where the activity duration are clearly defined and the emphasis is on the start date for each activity. Model **EN1** is used in R & D and other areas where projects are not known with a high degree of certainty and the emphasis is on completion dates.

The complexity of modern projects and the need for quick decisions are major factor in the general acceptance of graphics as the best way to communicate project plans and status. **EZPERT** now automatically produces **Gantt Barchart**, **Cost** and **Manpower Resource Graphs**, and **Task chart** (an aid to developing the logic of a project network), in addition to time-phased network diagram.

These augmented capabilities mean that today's **EZPERT** automatically generates graphical displays of data used by managers making rapid decisions aimed at bringing projects in on schedule and within budget, subject to resource availability constraints.

EZPERT can interface to virtually any **Scheduling Package**, **Data Base**, etc.

The **EZPERT** is hardware independent and make and model of hardware is unimportant as long as the computer has sufficient memory capacity for **EZPERT** operations. Input data is read in tabular form from cards, magnetic tape, or disk as well as keyboard. Operations performed by **EZPERT** automatically transform the data into graphical commands which drive a plotting device via its Independent Plot File Driver (**IPFDRV**) software.

EZPERT system Version 1.0 for Windows 95 greatly expands the capabilities provided in the previous release, which were dedicated solely to the task of automatically drawing time-phased project network diagram. It takes full advantages of Windows 95 GUI as well as featuring a new module called **EZPERT/NETWORK**. This module produces a variable and non-time-phased plots for both **Precedence** and **Arrow Diagrammed Projects** and presents the following functions and features.

1- Network's Plot Option Features.

- Draws Variable and Non-Time-Phased plots.
- Produces Variable plots in Date Per Column or Compressed Formats.
- Plots nodes on:

Early Start (**ES**),
Early Finish (**EF**),
Late Start (**LS**),
Late Finish (**LF**),
Target Start (**TS**),
Target Finish (**TF**) dates.

2- Network's Plot Layout Features.

- Controls the Plot Height, Plot Length, or Page Length.
- Produces a Snapshot or Window plots.
- Includes/Excludes annotation on off-page connectors.

3- Network's Data Display Features.

- Defines up to 8 User defined Fields.
- Includes/Excludes Zero Duration Activities, Completed Activities, Reference
- Defines up to 32 Character Codes Nodes, Border Dates.
- Shows activity status as Slashed Nodes and/or Thermometer Bars.
- Highlight up to 6 Critical Paths with different colors and line types.
- In addition, up to 4,000 activities and/or relationships can be shown on one plot.

4- Network's Customized Nodes Shapes and Relationship Lines.

- Defines the Shape , Line Type, Color, Legend, and amount of annotation for each standard node type.
- Define Line Type , Color, Legend, and amount of annotation for each relationship type.
- Customizes the Shape, Line Type, Color, Legend, and amount of annotation for up to 30 nodes.
- Creates and labels up to 50 Zones.
- Defines up to 10 Date Lines with Text.
- Defines up to 12 Lines of User Text in User Text Block.
- Includes/Excludes any element of the Title Block, Plot Title, User Text, Company and Project Information, or Legend.

EZPERT's new Interactive Graphics Display Module (**IGDM**) helps making project managers more productive and efficient. The plots can be reviewed under **IGDM** capability of **EZPERT** via **IPFDRV** and gives users the ability to review **EZPERT** plots on the screen and all supported different device drivers by Windows 95.

With **IGDM**, project managers can interactively review graphical data for consistency and correctness before generating hard copy. Changes to data can now be implemented in a timely manner before final hard copy goes to management or customers. **IGDM** also assists in presentation, preparation of proposals, and more. **IGDM** eliminates plotting turnaround delay by allowing a user to review a plot or graph immediately on the terminal screen linked to PC platform.

IGDM can display an entire Network, Bar or XY Charts as any part of the display window. Without the Interactive Graphics Display Module, knowing what data to change, could be very time consuming. **IGDM** eliminates the delay between job submittal and plotting. The user can select a frame (one page of a plot or graph) and specify how much and what portion of the frame is to be displayed. When the display is generated, it can easily be enlarged; compressed; scrolled up or down, left or right, or positioned. The user can change the necessary data, and quickly reprocess the information.

EZPERT Barchart Module has been enhanced to provide the following functions and capabilities:

5- Barchart's Plot Layout Features.

- The ability to change the size of symbols independently of the character size.
- The ability to plot horizontal reference lines in the schedule area of a bar chart.
- The ability to draw up to nine lines in the Project Title area with all nine lines having different character sizes.
- Zero Duration Activities can now be plotted as one symbol rather than two symbols on top of each other.
- The ability to plot slippage between the schedule dates and actual dates.
- The ability to combine Milestone on one line and plot text fields next to them.

6- Additional Features.

EZPERT not only interfaces to most common project management system, it also allows any input file to be defined in for **EZPERT**. All of the output will have the same consistent look, if different user in your organization use different planning and scheduling package simultaneously. **EZPERT** currently interfaces to the following project management systems;

- | | |
|----------------------------|------------------------------------|
| • VISION | • Primavera |
| • ARTEMIS | • QWIKNET |
| • HORNET | • SuperProject Expert |
| • Microsoft Project | • SuperProject Plus |
| • HTPM | • Time Line |
| • Pert Master | • WINGS |
| • PMW | • MAPPS |
| • Mac Project Pro | • Project Scheduler 5 and 6 |
| • PPARS | |

EZPERT is a device independent product and gives you the choice of all Windows 95 device driver. You may chose from the list of most common drivers from the printer menu of Windows 95. It also supports all major graphics cards, such as CGA, VGA, SVGA and EGA.

EZPERT/PC communicates with **EZPERT** professional on mainframe such as **IBM/MVS**, **VAX/VMS** and **ALPHA/AXP** or **UNIX** platform versions. You may use your PC as front runner as an integral part of a company-wide project management system.

EZPERT displays Bar, Network and XY charts diagrams on a graphics display screen.

EZPERT permits review of diagrams immediately instead of hours or days later.

EZPERT also does the following tasks;

1. Locates a specific activity in a network diagram and allows for relationship display.

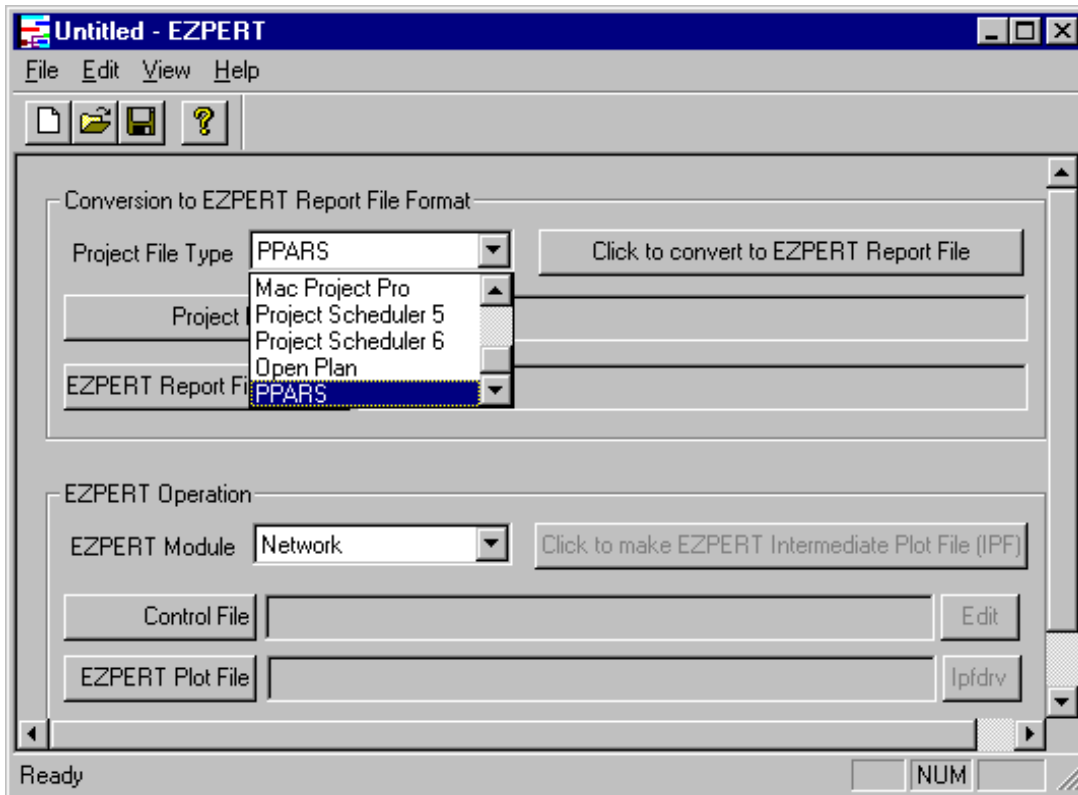
2. Allow scrolling horizontally or vertically through a large diagram data as well as zoom in and out functionality.
3. Permits activities with the same codes to be reviewed.
4. Gives the option for display screen output to be sent directly to another supported device (i.e. Printer or Plotter).
5. Individual definition for selection of activities.
6. Ability to store specifications for later use and creation of internal standards.
7. Previewing the plot including zooming and panning.
8. Automatic scaling of drawing and fit to page capability.
9. User defined plot size.
10. Storing capability for plot files for later output or transfer.
11. Transportability of the charts to any word processing application.
12. It has Object Embedding Link (OLE) capability.
13. Keyboard data input for Project Management System (PMS) independent graphics.
14. Host link feature
15. English, French or German menus and documentation.

EZPERT's ability to tailor its input specification allows it to interface to any project management, scheduler, or data system.

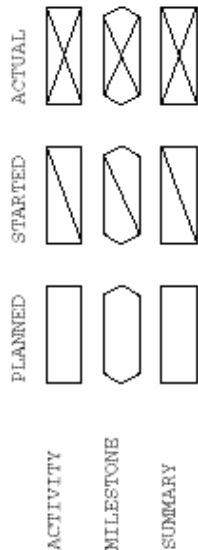
EZPERT has provisions to allow users to take advantage of their 4GL/Spreadsheet products for manipulating their project management data and producing plots. Imports are supported from the following system;

- **dBase III and IV**
- **Rbase**
- **FoxPro**
- **Lotus 1-2-3 and Notes**
- **Oracle**
- **IBM Plans+**
- **Supercal3**

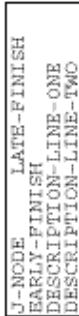
EZPERT/PC can export a plot into Data Exchange Format or **.DXF** files and **AUTOCAD** and other popular CAD packages can then read these **.DXF** files.



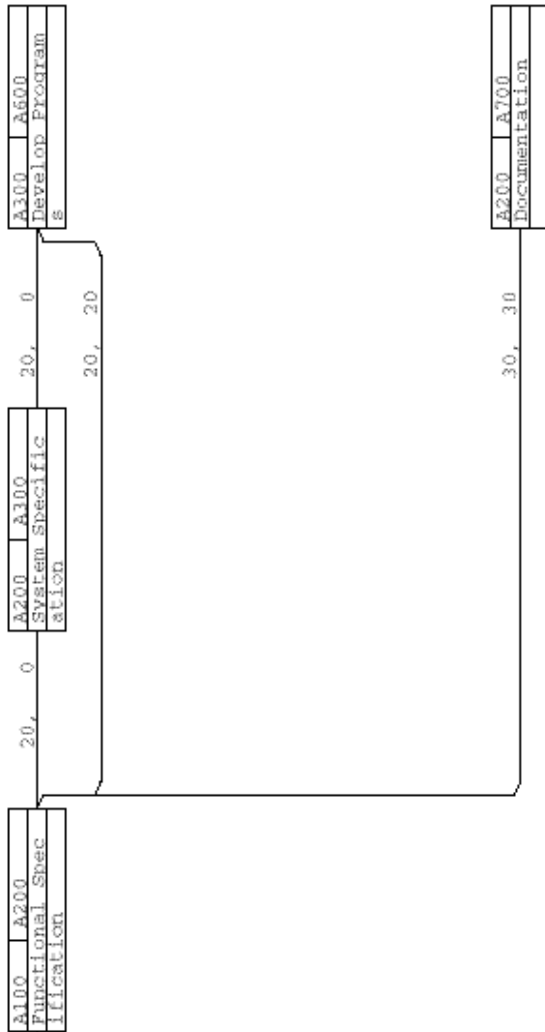
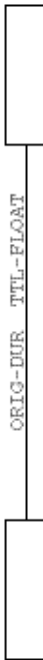
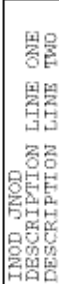
NON-TIME PHASED PLOT



EVENT LEGEND



ACTIVITY LEGEND



Galaxy Applied Engineering, Inc.

Putting Project Management

At Your Fingertips

PROJECT: 92DOC1J2 RCP: 1J03

RUN DATE: 28FEB91 DATA DATE: 28FEB91

PRODUCT OF GALAXY APPLIED ENGINEERING

